

**TOPSUN**  
**HEATING**

Smart, Beautiful & Green

# Interior Products

**Product Catalog**  
**2024**

English







# **THE INNOVATIVE TECHNOLOGY**

TopSUN Heating Inc. is an international Canadian-Iranian manufacturer headquartered in British Columbia focused on developing innovative, green and smart electric heating solutions.

Our goal is the global use of new and innovative electric heating equipment that leads our users to safe and green sources of energy.

TopSUN products are the result of commitment to research, product innovation and exceptional services, which are produced and supplied according to the needs and requests of heating system users for more comfort and easier life.

We want to change the way people heat by developing heating systems that are smarter , easier to use and maintenance-free, while using less energy, being more cost-effective and offering modern, luxurious comfort.

With TopSUN electric heating technologies, we strive to create a smart, green, sustainable, affordable, luxurious and modern future for all of us.

**15** INNOVATION  
YEARS HISTORY

**TOPSUN**



# **TOPFILM UNDERFLOOR HEATING FILMS**





# HEATING, THE HEARTH OF HOME



TM

**TOPSUN**

Smart, Beautiful & Green

## *Infinite Comfort*

---

The best  
natural sense  
of warmth

Supreme comfort  
even at lower  
temperature

A perfect heating  
system for any  
type of floor

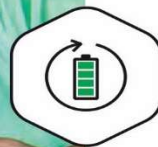




**Clean Energy**



**Fast Speed Execution**



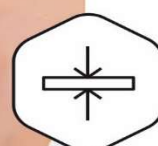
**BMS Integration**



**No Fluid**



**Remote Control**



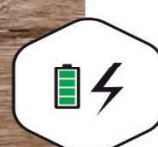
**Low thickness**



**Uniform Temperature**



**Safe & Risk-free**



**Electrical & Battery**



**After Sale Services**

# FLOOR HEATING







# Installation Types

## New Build & Renovation



**Main System**



**Supporting System**

Film Thk. <sup>1</sup>	35 - 45 Micron	30 - 35 Micron
Finish Thk.	10 ~ 15 mm	10 ~ 15 mm
Film Width	40 cm / 80 cm	40 cm / 80 cm
Max .Temp.	55- 60 C	35- 40 C
Covering Perc. <sup>2</sup>	50 - 75 %	Desired Routes
App. Surface.	Earthen Floor Pumice Concrete Floor	Earthen Floor Pumice Concrete Floor
Install Type	Cement Mortar Tile Adhesive	Directly Applied (No. Additives) Tile Adhesive
Optm. Inst. Height	3- 7 cm	1- 3 cm
Surfacing	Ceramic Tile Parquet Stone	Ceramic Tile Parquet Carpet
Power	85 - 120 W/m <sup>2</sup>	60 - 100 W/m <sup>2</sup>
Voltage	110 - 240 V   AC 12 - 24 V   DC (Wet Area)	110 - 240 V   AC 12 - 24 V   DC (Wet Area)
Warranty <sup>3</sup>	10 Years (Lifetime Guarantee)	10 Years (Lifetime Guarantee)

1 Insulation + Film + Wiring + Thermostat

2 Covering percent of usable space in the building

3 See conditions on [topsunheating.com/Warranty](http://topsunheating.com/Warranty) |





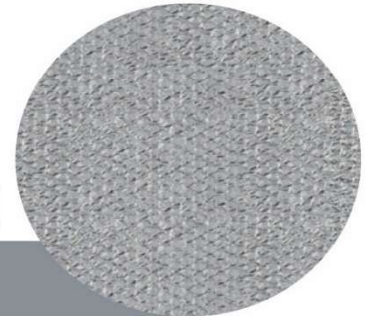
# WORKING CONDITIONS AND INSTALLABLE DEPTH



Cement Screed  
Tile Adhesive

## AlumSUN

Insulation



- Incompressible (bearing up to 4 tons of extended weight)
- Durable and lightweight
- 97% reflection of thermal radiant energy
- Heat, Cold and Moisture insulation
- Preventing the growth of fungus and mold
- Preventing the nesting of insects and rodents
- Non-toxic / non-carcinogenic

## TopFilm

Underfloor Heating Films



- Can be used under different types of surfaces (cement concrete, tiles, ceramics, parquet)
- Can be used under carpets and rugs
- Reducing heating and cooling costs (reducing heat loss)
- Easy installation

## FLOOR TYPES



WOOD & PARQUETTE



LAMINATE



TILE & STONE



CONCRETE SLAB



In the presence of moisture and dew, the system is resistant to moisture and provides the possibility of dew removal for a limited time. In case of neglecting moisture, after a certain period, the entire or part of the heating system will be disconnected.



# LIST OF PRODUCTS & ESTIMATED POWER CONSUMPTION

Code	Product	Dimension (m)	Power (Watt)	Coverage (m <sup>2</sup> )
GH-W820	TopFilm   Main App.	L = 2	170 ~ 240	3 ~ 5
GH-W825	TopFilm   Main App.	L = 2.5	212 ~ 300	3.5 ~ 6
GH-W830	TopFilm   Main App.	L = 3	255 ~ 360	4 ~ 7
GH-W835	TopFilm   Main App.	L = 3.5	298 ~ 420	5 ~ 8
GH-W840	TopFilm   Main App.	L = 4	340 ~ 480	6 ~ 9
GH-W845	TopFilm   Main App.	L = 4.5	383 ~ 540	6.5 ~ 9.5
GH-W850	TopFilm   Main App.	L = 5	425 ~ 600	7 ~ 10
GH-W855	TopFilm   Main App.	L = 5.5	468 ~ 660	8 ~ 11
GH-W860	TopFilm   Main App.	L = 6	510 ~ 720	9 ~ 12
GH-W870	TopFilm   Main App.	L = 7	595 ~ 840	10 ~ 14
GH-W880	TopFilm   Main App.	L = 8	680 ~ 960	11 ~ 16
GH-W890	TopFilm   Main App.	L = 9	765 ~ 1080	12 ~ 18
GH-W800	TopFilm   Main App.	L = 10	850 ~ 1200	14 ~ 20

## Width = 80 cm

Code	Product	Dimension (m)	Power (Watt)	Coverage (m <sup>2</sup> )
TH-W420	TopFilm   Supp. App.	L = 2	120 ~ 200	1 ~ 2
TH-W425	TopFilm   Supp. App.	L = 2.5	150 ~ 250	1.5 ~ 2.5
TH-W430	TopFilm   Supp. App.	L = 3	180 ~ 300	2 ~ 3
TH-W435	TopFilm   Supp. App.	L = 3.5	210 ~ 350	2.5 ~ 3.5
TH-W440	TopFilm   Supp. App.	L = 4	240 ~ 400	3 ~ 4
TH-W445	TopFilm   Supp. App.	L = 4.5	270 ~ 450	3.5 ~ 4.5
TH-W450	TopFilm   Supp. App.	L = 5	300 ~ 500	4 ~ 5.5
TH-W455	TopFilm   Supp. App.	L = 5.5	330 ~ 550	4.5 ~ 6
TH-W460	TopFilm   Supp. App.	L = 6	360 ~ 600	5 ~ 7
TH-W470	TopFilm   Supp. App.	L = 7	420 ~ 700	6 ~ 8
TH-W480	TopFilm   Supp. App.	L = 8	480 ~ 800	7 ~ 9
TH-W490	TopFilm   Supp. App.	L = 9	540 ~ 900	8 ~ 10
TH-W400	TopFilm   Supp. App.	L = 10	600 ~ 1000	9 ~ 11

## Width = 40 cm





# CONTROLLERS & DIMMER

*The most  
harmonious sense  
of warmth with*

**FULL CONTROL**



**Remote  
Control**



**Electrical &  
Battery**



**Safe &  
Risk-free**



**Uniform  
Temperature**



**BMS  
Integration**



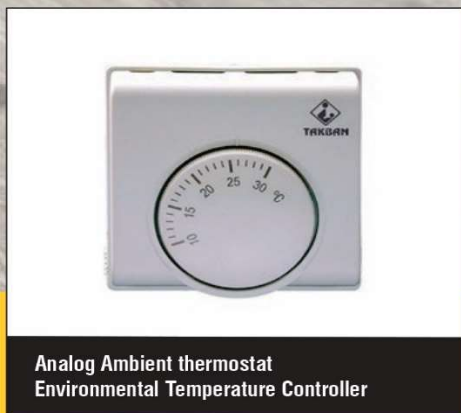
# CONTROLLERS & DIMMER



Smart Floor Heating Ambient thermostat  
Environmental & Floor Temperature Controller



Wifi Smart Floor Heating Thermostat  
Remote Floor Temperature Controller



Analog Ambient thermostat  
Environmental Temperature Controller



SMS & Wifi Controller  
Remote Controller





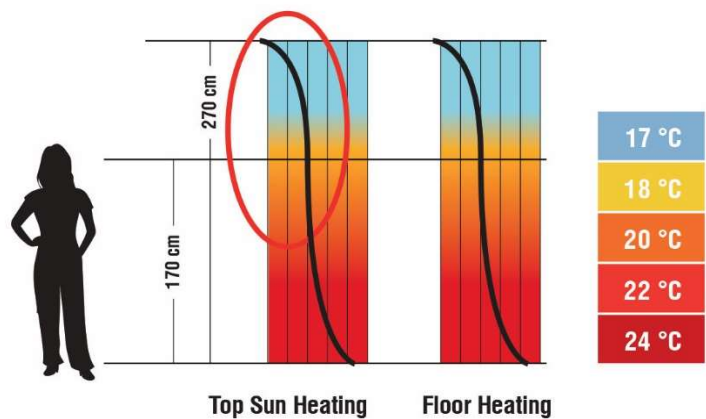
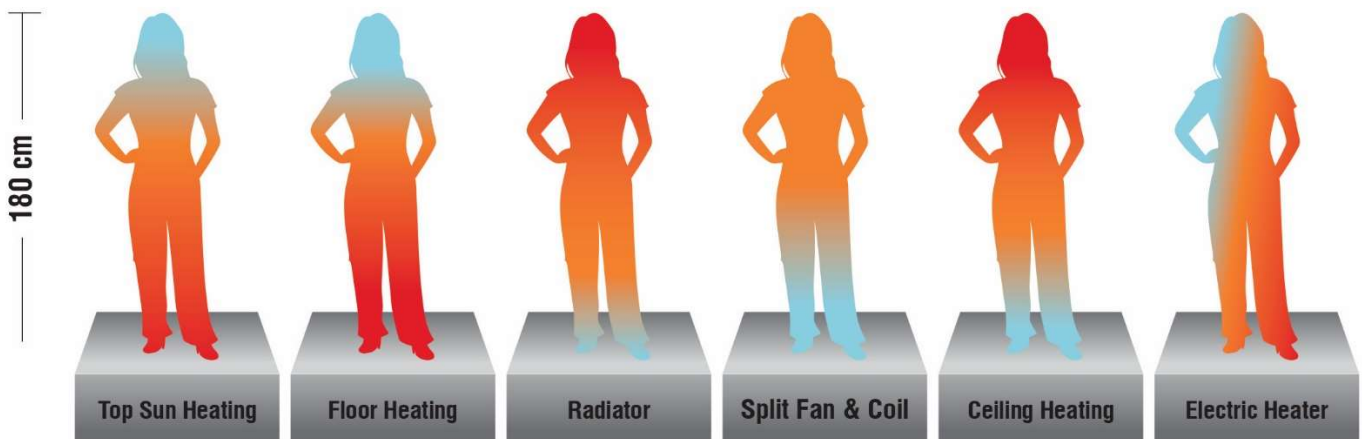
**INNOVATIONS  
FOR YOUR COMFORT  
& YOUR FAMILY**





# COMPARISON ON HEATING SYSTEMS

	Topsun Heating Systems	Radiator (panel and cornice)	Underfloor heating (pipe)	Split fan and coil
Heat dissipation (convective flow)	Uniform (minimum)	Non-uniform (average)	Uniform (high)	Non-uniform (high)
Total cost (purchase, installation, commission)	Low (free installation)	Medium	High	High
Time required for space heating	45 minutes - 1.5 hours	6-4 hours	10 to 15 hours	2.5 to 3 hours
Visual appearance	No space occupation	Space occupation	No space occupation	Space occupation
Possible repairs (service life)	Independent (< 10 years)	Required (7 to 10 years)	Required (5 to 6 years)	Required (2 to 4 years)
Energy consumption (operational efficiency)	Average (%90)	Average (40 to 50 percent)	Average (50 to 55 percent)	Average (50 to 55 percent)
Wall pollution and flow circulation	Not applicable	Yes	Has the sound of water flow	Sound of air flow
Ease and speed of installation	Easy and very fast	Average and time-consuming	Complex & time-consuming	Medium
Zone control and digital control	Yes	Not applicable	Not applicable	Not applicable
Production temperature range	150-10 degrees Celsius	95 - 45 degrees Celsius	30 to 60 degrees Celsius	16 to 36 degrees Celsius
Added thickness (with insulation)	Maximum 1 centimeter	Minimum 10 centimeters	Minimum 10 centimeters	
Installation locations	Floor, walls, and ceiling	Walls and cornices	Only floor	Walls and floor
Intelligent temperature & time control	Yes	Not applicable	Not applicable	Not applicable
Startup and usage timeframe	Before thin work	After thin work	After thin work	After thin work







# TopFilm Floor Heating



Date Of Request:

Attachment:



The first and only producer  
Of electric plate heat systems.

### Order Registration Form - Building Heating (Central Heating)

This form is prepared for the purpose of collecting initial information, estimating initial and operational costs, and issuing a pro forma invoice. Therefore, please complete the requested information as accurately as possible for an accurate estimate.

Company/Individual Name: ..... Economic Code/National ID: .....  
Managing Director: .....  
Address, Phone/Fax (Head Office): .....  
Management Coordinator: .....  
Address, Phone/Fax (Installation Location): .....

**Usage Type:**

- 1.Residential     2.Administrative     3.Religious     4.Recreational and Touristic     5.Hospital     6.Other

**Physical Condition of the Premises:**

- 1.Operational and In Use     2.Under Construction     3.In Consultation and Design Phase

**Information about Spaces, Temperature Conditions, and Materials Used:**

Total Area: ..... square meters | Approximate Dimensions of the Space: Length:..... meters    Width:..... meters    Height:..... meters  
Number of Divided Zones in the Entire Space (Number of Rooms or Work/Administrative Areas): .....  
Number of Zones with Uniform Temperature Conditions: .....  
Minimum Cold Season Temperature at the Location: ..... Desired Required Temperature: .....  
Dimensions of Rooms/Hall/Kitchen:1/..... meters    2/..... meters    3/..... meters    4/..... meters    5/..... meters    6/..... meters  
The material of the exterior walls: ..... The material of the ceiling: ..... The material of the floor: .....  
The material of the exterior doors: ..... The quantity: ..... Their dimensions: .....  
The material of the windows: ..... The quantity: ..... Their dimensions: .....

**Other Information:**

The number of fans present on-site: ..... The dimensions and approximate capacity of the fans: .....  
Do you need heating for the ceiling (attics and sloped roofs)?  YES     NO    Dimensions of the ramps: ..... The number of ramps: .....  
Do you need heating for the ceiling (attics and sloped roofs)?  YES     NO  
Do you need heating for the stairs (underneath/over them)?  YES     NO  
The dimensions of the stairs: ..... The number of stairs: .....  
Do you need heating for storage tanks?     YES     NO    Diameter (in meters): .....  
Tank length (in meters): ..... The liquid inside the tank: .....  
The material of the tank: ..... The required temperature inside the tank: .....  
Limitations in Power Supply (in terms of power, voltage, and current): .....

**Custom Extra Items:**

- 1.Smart Temperature Controller     2.Smart Time Controller     3.Smart Humidity Controller     4.Relay for Protection Against Power Surges

In order to reduce electricity consumption, consider the following conditions:

Renewable Energies:     Available     Not Available

Other New Technologies:     Available     Not Available

Client's name: ..... Direct mobile phone of the client: .....

Signature and Date of the client: ..... Signature and Date of the Recipient of the Order: .....





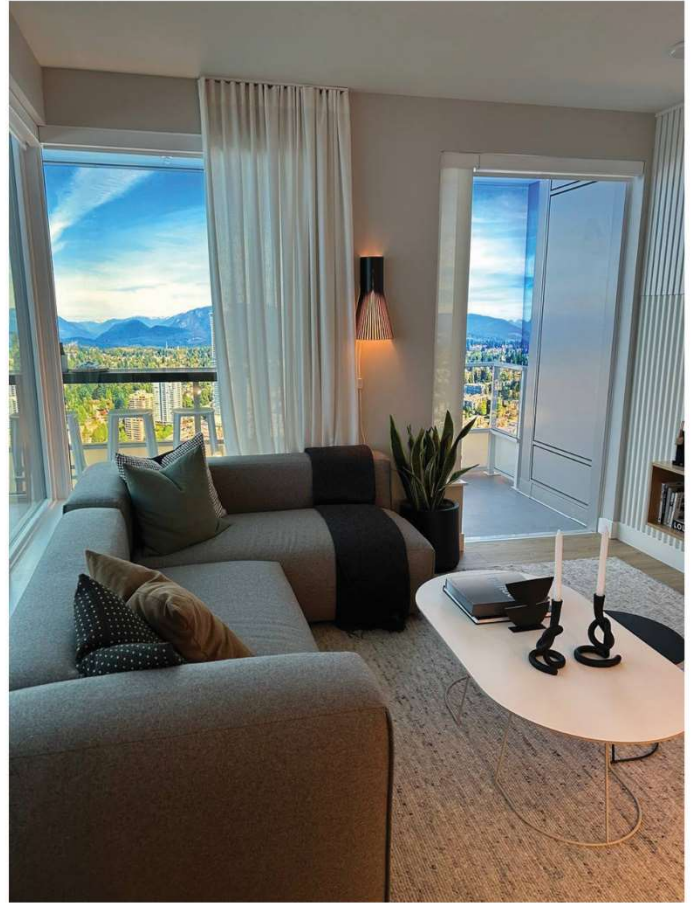
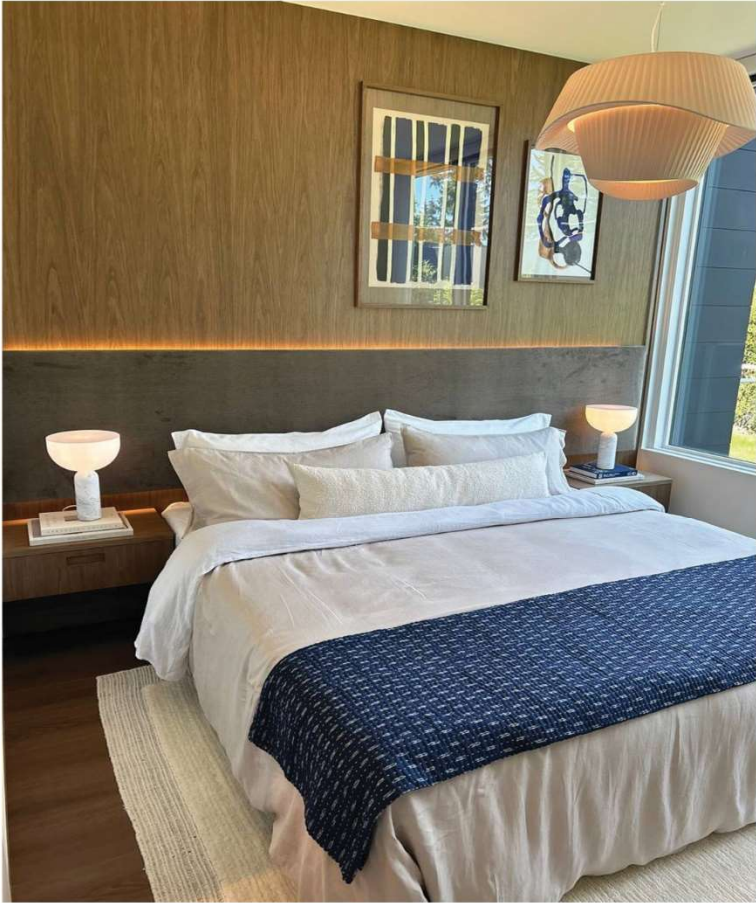
# PROJECTS







# PROJECTS







## *Warmth Cold Spots in Your Home*

### **AUXILIARY PORTABLE PADS**



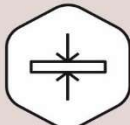
Clean Energy



Fast Speed Execution



No Fluid



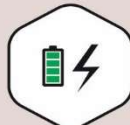
Low thickness



Uniform Temperature



Safe & Risk-free

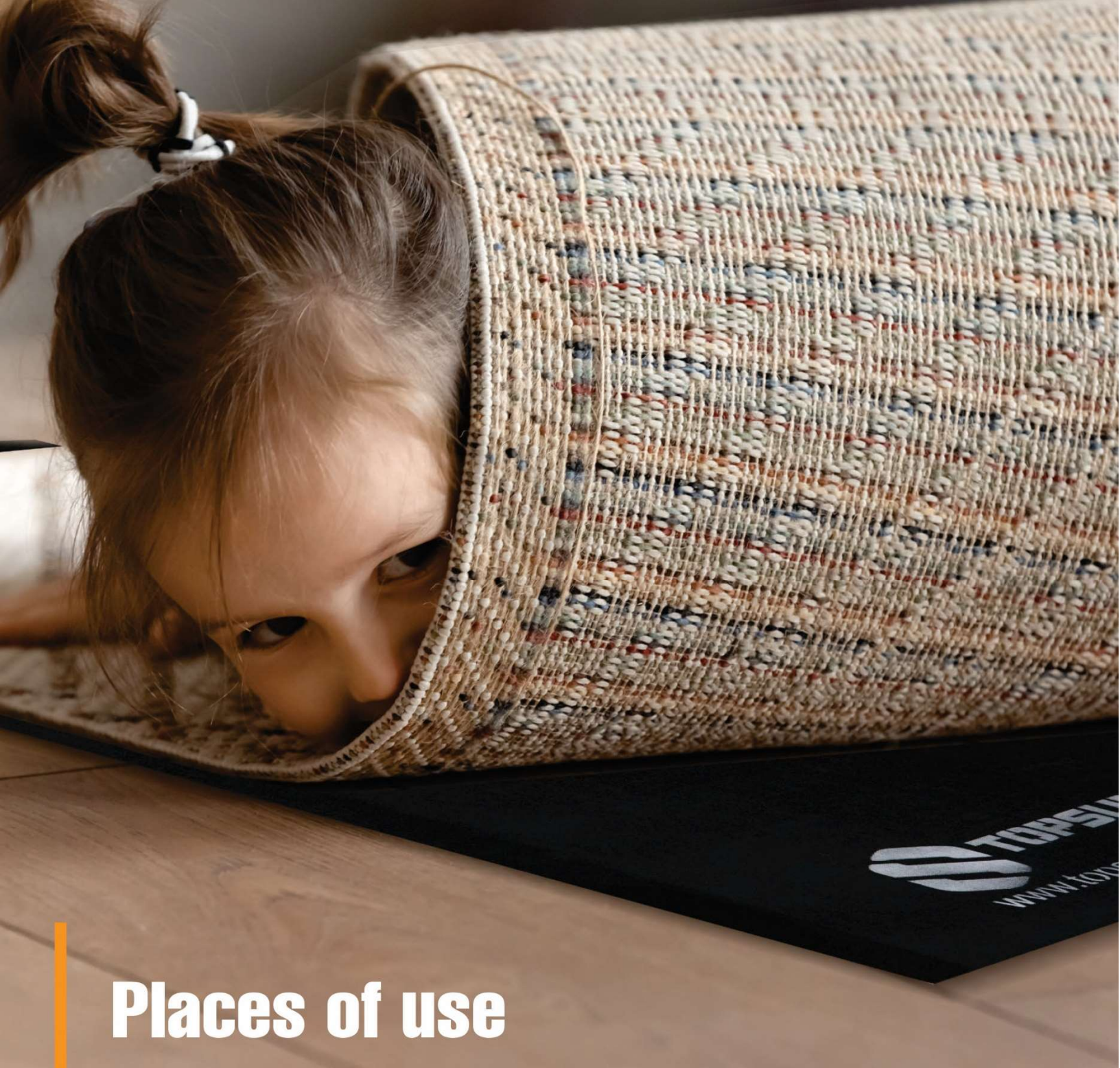


Electrical & Battery



After Sale Services





## Places of use

Heating for buildings above the pilot,  
parking lot and basement

Underfloor heating for homes and villas in cold areas

Suitable for all kinds of camellias,  
camping, containers and prefabricated buildings





**TOPSUN**<sup>TM</sup>  
Smart, Beautiful & Green





# **Endless Comfort**

**Simple, Safe,  
Energy Efficient**

**Perfect on Cold  
Surface Flooring**

**Innovative Heating  
Element**





## Product Features

Ability to Install	Under a variety of coatings <ul style="list-style-type: none"><li>- Carpet</li><li>- Kilim</li><li>- Rug</li><li>- Runner</li></ul>
Intelligent Operation	Temp. Thermostat (Automatic Temp. Adjustment) Dimmer (Manual Temp. Adjustment)
Thickness	Up to 35 micron
Slip Property	Non-Slip (Prevent coating from slipping) Easy & Quick Installation
Installation Feature	<ul style="list-style-type: none"><li>- No Special technical knowledge</li><li>- Installation just by manual guide</li></ul>
Max Temperature	35- 40 C
Moisture Property	Water Resistant
Standard Width	80 cm
Standard Lengths	1.2   1.5   2   3   3.5   4 m
Rows Number	1   2   3 Rows
Warranty	1 Year (Lifetime Guarantee)
Voltage	110 - 240 V   AC
Power	60 - 80 W/m <sup>2</sup>

See conditions on [topsunheating.com/Warranty](https://topsunheating.com/Warranty) |

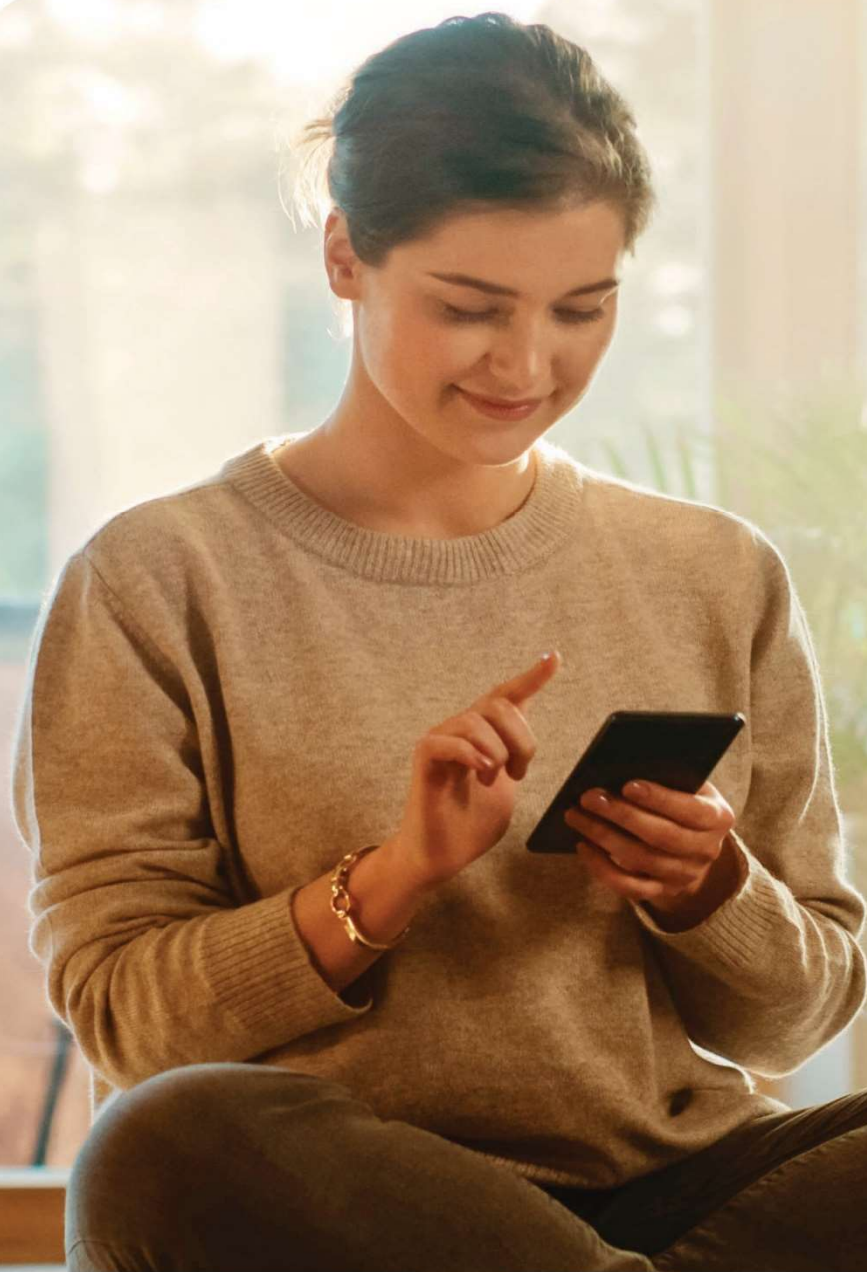


# TopFilm Sub - Floor Heating Pad





# Controllers & Dimmer



Temperature Dimmer  
(Manual Temperature Regulator )



Analog Ambient thermostat  
(Environmental Temperature Controller)



Smart Floor Heating thermostat  
(Floor Temperature Controller)



# LIST OF PRODUCTS & ESTIMATED POWER CONSUMPTION

Code	Product	Dimension	Power (Watt)
SHM-10	TopFilm   Aux. Pads	Rows = 1   L = 1.2 m	250 ~ 300
SHM-11	TopFilm   Aux. Pads	Rows = 1   L = 1.5 m	300 ~ 350
SHM-12	TopFilm   Aux. Pads	Rows = 1   L = 2 m	350 ~ 400
SHM-13	TopFilm   Aux. Pads	Rows = 1   L = 3 m	400 ~ 500
SHM-22	TopFilm   Aux. Pads	Rows = 2   L = 2 m	550 ~ 700
SHM-23	TopFilm   Aux. Pads	Rows = 2   L = 3 m	650 ~ 800
SHM-33	TopFilm   Aux. Pads	Rows = 3   L = 3 m	800 ~ 1100
SHM-34	TopFilm   Aux. Pads	Rows = 3   L = 3.5 m	950 ~ 1200
SHM-35	TopFilm   Aux. Pads	Rows = 3   L = 4 m	1200 ~ 1500

**Width = 80 cm**

Generally, TopSUN Sub-Floor Pads can be installed by customer without any special expertise.

## Safety Tips

- Do not Connect the TopSUN Pads in Roll-Out Mode.
- In TopSUN Multi-Rows Pads, which are typically arranged in two or three rows, be sure to avoid placing any the pads; even a corner of them on top of each other.
- Depending on the location of power outlet, adjust the power cable of TopSUN Pad.
- Due to Structure of TopSUN Pads, do not cover it with wool mats or duvets or thick blankets.  
(If you need to use a cover on the Carpet, Rug, Kilim or Runner, just use a thin blanket)
- If needed to control the TopSUN pads temperature, can use Thermostat or Dimmer.





# Ordering Conditions

## **Ordering according to standard dimensions:**

TopSUN sub-floor pads are manufactured according to standard dimensions of carpets, kilims and sides. Therefore, there is a possibility to choose between standard dimensions of sub-floor pads.

## **Custom length and number of rows:**

If requested the custom length and number of rows with standard width of pads, it is possible to produce according desired requests.

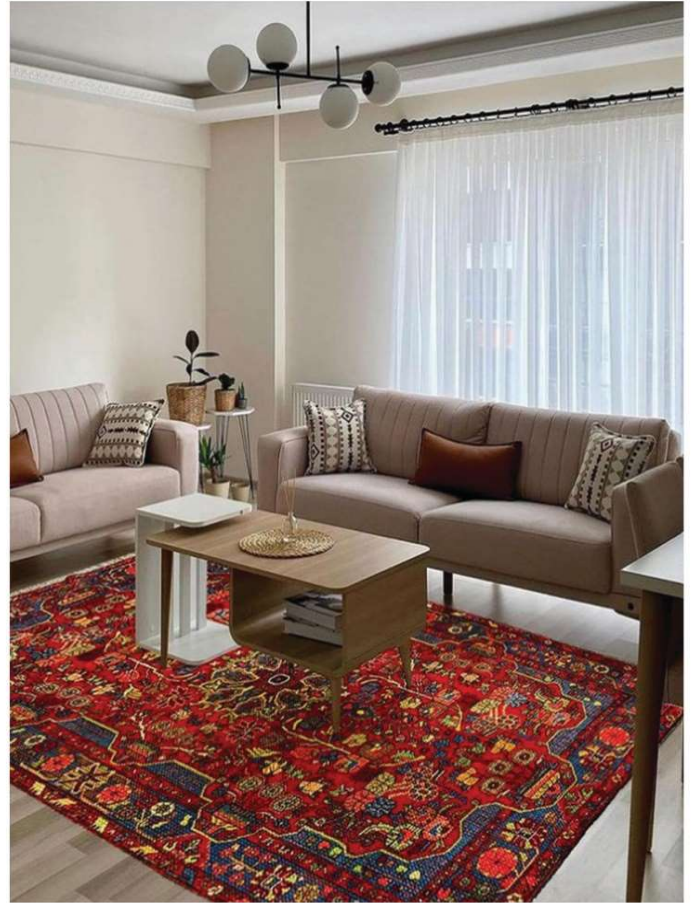
TopSUN Pads Standard Width = 80 cm







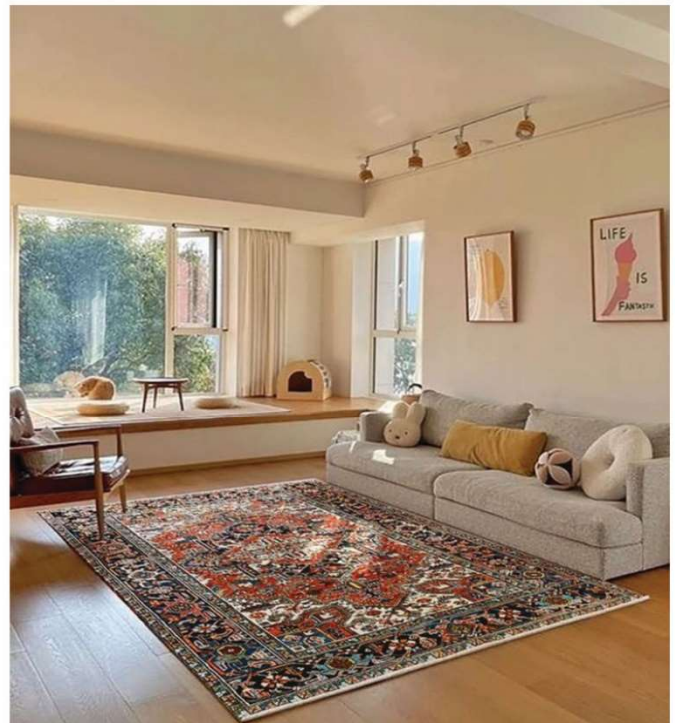
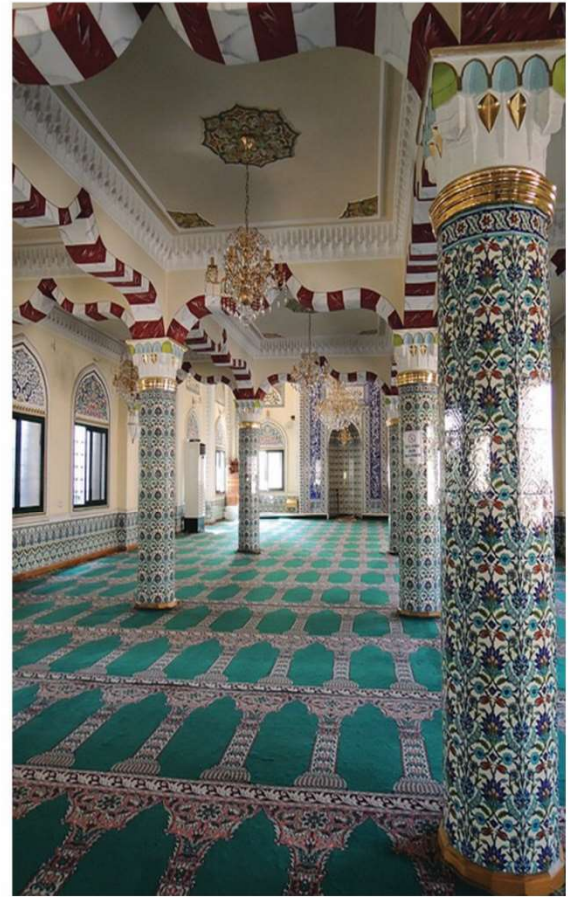
# PROJECTS







# PROJECTS











# Thermo Panels

- Wall Panel Radiators
- Towel Dryer





# Thermo Panel - Wall Radiant Panel



Remote Control

**MODERN  
GREEN  
SMART  
HEATING**





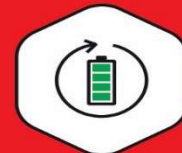
# Smart, Beautiful & Green Heating



**Clean  
Energy**



**Fast Speed  
Execution**



**BMS  
Integration**



**No  
Fluid**



**Remote  
Control**



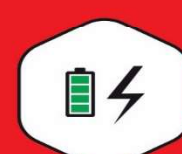
**Low  
thickness**



**Uniform  
Temperature**



**Safe &  
Risk-free**



**Electrical &  
Battery**



**After Sale  
Services**



# DecorSUN Thermo Panel

## Radiators & Towel Dryer

### Wall Radiator (Thermo Panel)



### Towel Dryer (Thermo Panel)



Material	Tempered Glass	Tempered Glass
Thickness	8 mm	8 mm
Size	12 Sizes	12 Sizes
Layout	Single Panel   Multi Panels	Single Panel
Dist. to Wall	3 cm	5 cm
Max .Temp.	85 °C	65 °C
Covering Area.	2 ~ 35 m <sup>2</sup>	2 ~ 12 m <sup>2</sup>
Custom Image	Image Catalog Individual Image (Family, Friends,...) Internet Searching Images Photographing Image	Image Catalog Individual Image (Family, Friends,...) Internet Searching Images Photographing Image
Install Type	Vertical   Horizontal   Angled	Vertical
Optm. Inst. Height	1.2 ~ 1.8 m	1.2 ~ 1.8 m
Power	150 - 1800 W/m	150 - 500 W/m
Voltage	110 - 240 V   AC 12 - 24 V   DC	110 - 240 V   AC 12 - 24 V   DC
Warranty	10 Years (Lifetime Guarantee)	10 Years (Lifetime Guarantee)

See conditions on [topsunheating.com/Warranty](https://www.topsunheating.com/Warranty) |





# LIST OF PRODUCTS

## DecorSUN

### Mono Part I Wall Radiators

Code	Product	Dimension	Power	Coverage
D-901	DecorSUN   Glass Radiator	50 × 50 cm	150 W	2 ~ 3 m <sup>2</sup>
D-902	DecorSUN   Glass Radiator	50 × 90 cm	250 W	5 ~ 7 m <sup>2</sup>
D-903	DecorSUN   Glass Radiator	50 × 110 cm	400 W	9 ~ 11 m <sup>2</sup>
D-904	DecorSUN   Glass Radiator	50 × 150 cm	500 W	11 ~ 13 m <sup>2</sup>
D-905	DecorSUN   Glass Radiator	90 × 90 cm	500 W	10 ~ 12 m <sup>2</sup>
D-906	DecorSUN   Glass Radiator	90 × 110 cm	700 W	12 ~ 15 m <sup>2</sup>
D-907	DecorSUN   Glass Radiator	90 × 150 cm	800 W	15 ~ 18 m <sup>2</sup>
D-908	DecorSUN   Glass Radiator	90 × 200 cm	900 W	18 ~ 20 m <sup>2</sup>
D-909	DecorSUN   Glass Radiator	60 × 60 cm	200 W	3 ~ 4 m <sup>2</sup>
D-910	DecorSUN   Glass Radiator	60 × 80 cm	250 W	4 ~ 6 m <sup>2</sup>
D-911	DecorSUN   Glass Radiator	60 × 110 cm	400 W	10 ~ 12 m <sup>2</sup>
D-912	DecorSUN   Glass Radiator	60 × 130 cm	500 W	11 ~ 13 m <sup>2</sup>

- ,For the registration of custom products (dimensions, shape and form material) inquiries must be contact to the sales department for order placement
- The minimum order quantity for custom products is 20 dimensional pieces of each specification.



# D-903

## WALL RADIATOR

Dimensions	50 × 110 cm
Coverage Area	9 - 11 m <sup>2</sup>
Power Consumption	400 Watts
Remote Control	Yes
Ambient Thermostat	Yes
Surface	0.55 m <sup>2</sup>
Custom Image	Yes



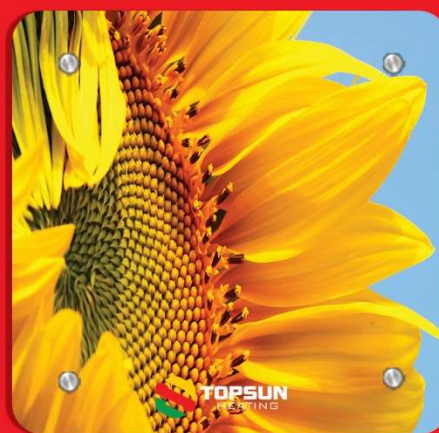


Dimensions	50 × 50 cm
Coverage Area	2 - 3 m <sup>2</sup>
Power Consumption	150 Watts
Remote Control	Yes
Ambient Termostat	Yes
Surface	0.25 m <sup>2</sup>
Custom Image	Yes

# D-901

---

## WALL RADIATOR



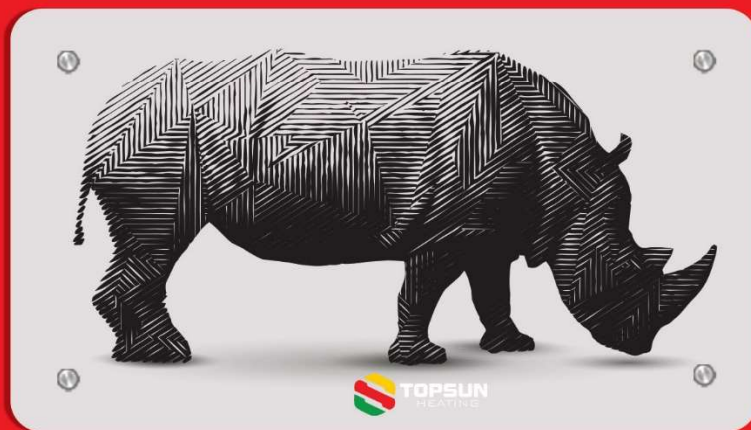


Dimensions	50 × 90 cm
Coverage Area	5 - 7 m <sup>2</sup>
Power Consumption	250 Watts
Remote Control	Yes
Ambient Thermostat	Yes
Surface	0.45 m <sup>2</sup>
Custom Image	Yes

# D-902

---

## WALL RADIATOR







Dimensions	50 × 150 cm
Coverage Area	11 - 13 m <sup>2</sup>
Power Consumption	500 Watts
Remote Control	Yes
Ambient Thermostat	Yes
Surface	0.75 m <sup>2</sup>
Custom Image	Yes

# D-904

---

## WALL RADIATOR





# D-905

---

## WALL RADIATOR

Dimensions	90 × 90 cm
Coverage Area	10 - 12 m <sup>2</sup>
Power Consumption	500 Watts
Remote Control	Yes
Ambient Termostat	Yes
Surface	0.81 m <sup>2</sup>
Custom Image	Yes





**TOPSUN**  
HEATING

Dimensions	90 × 110 cm
Coverage Area	12 - 15 m <sup>2</sup>
Power Consumption	700 Watts
Remote Control	Yes
Ambient Termostat	Yes
Surface	0.99 m <sup>2</sup>
Custom Image	Yes

# D-906

---

## WALL RADIATOR



**TOPSUN**  
HEATING



Dimensions	90 × 150 cm
Coverage Area	15 - 18 m <sup>2</sup>
Power Consumption	800 Watts
Remote Control	Yes
Ambient Thermostat	Yes
Surface	1.35 m <sup>2</sup>
Custom Image	Yes

# D-907

## WALL RADIATOR







Dimensions	90 × 200 cm
Coverage Area	18 - 20 m <sup>2</sup>
Power Consumption	900 Watts
Remote Control	Yes
Ambient Termostat	Yes
Surface	1.80 m <sup>2</sup>
Custom Image	Yes

# D-908

## WALL RADIATOR





Dimensions	60 × 60 cm
Coverage Area	3 - 4 m <sup>2</sup>
Power Consumption	200 Watts
Remote Control	Yes
Ambient Thermostat	Yes
Surface	0.36 m <sup>2</sup>
Custom Image	Yes

# D-909

---

## WALL RADIATOR







Dimensions	60 × 80 cm
Coverage Area	4 - 6 m <sup>2</sup>
Power Consumption	250 Watts
Remote Control	Yes
Ambient Thermostat	Yes
Surface	0.48 m <sup>2</sup>
Custom Image	Yes

# D-910

---

## WALL RADIATOR





Dimensions	60 × 110 cm
Coverage Area	10 - 12 m <sup>2</sup>
Power Consumption	400 Watts
Remote Control	Yes
Ambient Termostat	Yes
Surface	0.66 m <sup>2</sup>
Custom Image	Yes

# D-911

---

## WALL RADIATOR







# D-912

## WALL RADIATOR

Dimensions	60 × 130 cm
Coverage Area	11 - 13 m <sup>2</sup>
Power Consumption	500 Watts
Remote Control	Yes
Ambient Termostat	Yes
Surface	0.78 m <sup>2</sup>
Custom Image	Yes







# LIST OF PRODUCTS

## DecorSUN

### Multi Parts I Wall Radiators

Code	Product	Dimension	Power	Coverage
D-913	DecorSUN   Layout 1	90 × 150 cm (3 Parts) 3×(90 × 50 cm)	750 W	15 ~ 20 m <sup>2</sup>
D-914	DecorSUN   Layout 2	110 × 150 cm (3 Parts) 3×(110 × 50 cm)	1200 W	27 ~ 32 m <sup>2</sup>
D-915	DecorSUN   Layout 3	110 × 150 cm (3 Parts) 2×(90 × 50 cm) 1×(110 × 50 cm)	900 W	18 ~ 24 m <sup>2</sup>
D-916	DecorSUN   Layout 4	150 × 250 cm (5 Parts) 2×(90 × 50 cm) 2×(110 × 50 cm) 1×(150 × 50 cm)	1800 W	30 ~ 35 m <sup>2</sup>
D-917	DecorSUN   Layout 5	50 × 150 cm (3 Parts) 3×(50 × 50 cm)	450 W	5 ~ 9 m <sup>2</sup>
D-918	DecorSUN   Layout 6	110 × 150 cm (5 Parts) 4×(50 × 50 cm) 1×(110 × 50 cm)	1000 W	15 ~ 20 m <sup>2</sup>
D-919	DecorSUN   Layout 7	60 × 180 cm (3 Parts) 3×(60 × 60 cm)	600 W	8 ~ 10 m <sup>2</sup>
D-920	DecorSUN   Layout 8	130 × 180 cm (5 Parts) 4×(60 × 60 cm) 1×(60 × 130 cm)	1300 W	20 ~ 25 m <sup>2</sup>



# D913

## MULTI THERMO PANELS

Panels	90 cm x 50 cm   N = 3
Coverage Area	15 - 20 m <sup>2</sup>
Panels Align	Vertical
Inst. Direction	Horizontal
Power	750 Watts
Remote Control	Yes
Thermostat	Optional / Yes
Custom Image	Yes





Panels	90 cm x 50 cm   N = 3
Coverage Area	15 - 20 m <sup>2</sup>
Panels Align	Vertical / Horizontal
Inst. Direction	Horizontal / Vertical
Power	750 Watts
Remote Control	Yes
Thermostat	Optional / Yes
Custom Image	Yes

# D913

## MULTI THERMO PANELS







# D914

## MULTI THERMO PANELS

Panels	110 cm x 50 cm   N = 3
Coverage Area	27 - 32 m <sup>2</sup>
Panels Align	Vertical
Inst. Direction	Horizontal
Power	1200 Watts
Remote Control	Yes
Thermostat	Optional / Yes
Custom Image	Yes





Panels	90 cm x 50 cm   N = 3
Coverage Area	15 - 20 m <sup>2</sup>
Panels Align	Vertical / Horizontal
Inst. Direction	Horizontal / Vertical
Power	750 Watts
Remote Control	Yes
Thermostat	Optional / Yes
Custom Image	Yes

# D914

---

## MULTI THERMO PANELS





# D915

## MULTI THERMO PANELS

Panels	110 cm x 50 cm N = 1 90 cm x 50 cm N = 2
Coverage Area	18 - 24 m <sup>2</sup>
Panels Align	Vertical
Inst. Direction	Horizontal
Power	900 Watts
Remote Control	Yes
Thermostat	Optional / Yes
Custom Image	Yes





Panels	110 cm x 50 cm   N = 1 90 cm x 50 cm   N = 2
Coverage Area	18 - 24 m <sup>2</sup>
Panels Align	Vertical / Horizontal
Inst. Direction	Horizontal / Vertical
Power	900 Watts
Remote Control	Yes
Thermostat	Optional / Yes
Custom Image	Yes

# D915

---

## MULTI THERMO PANELS





# D916

## MULTI THERMO PANELS

Panels	150 cm x 50 cm   N = 1 110 cm x 50 cm   N = 2 90 cm x 50 cm   N = 2
Coverage Area	30 - 35 m <sup>2</sup>
Panels Align	Vertical
Inst. Direction	Horizontal
Power	1800 Watts
Remote Control	Yes
Thermostat	Optional / Yes
Custom Image	Yes





Panels	150 cm x 50 cm N = 1 110 cm x 50 cm N = 2 90 cm x 50 cm N = 2
Coverage Area	30 - 35 m <sup>2</sup>
Panels Align	Vertical / Horizontal
Inst. Direction	Horizontal / Vertical
Power	1800 Watts
Remote Control	Yes
Thermostat	Optional / Yes
Custom Image	Yes

# D916

---

## MULTI THERMO PANELS





# D917

## MULTI THERMO PANELS

Panels	50 cm x 50 cm   N = 3
Coverage Area	5 - 9 m <sup>2</sup>
Panels Align	-
Inst. Direction	Horizontal
Power	450 Watts
Remote Control	Yes
Thermostat	Optional / Yes
Custom Image	Yes



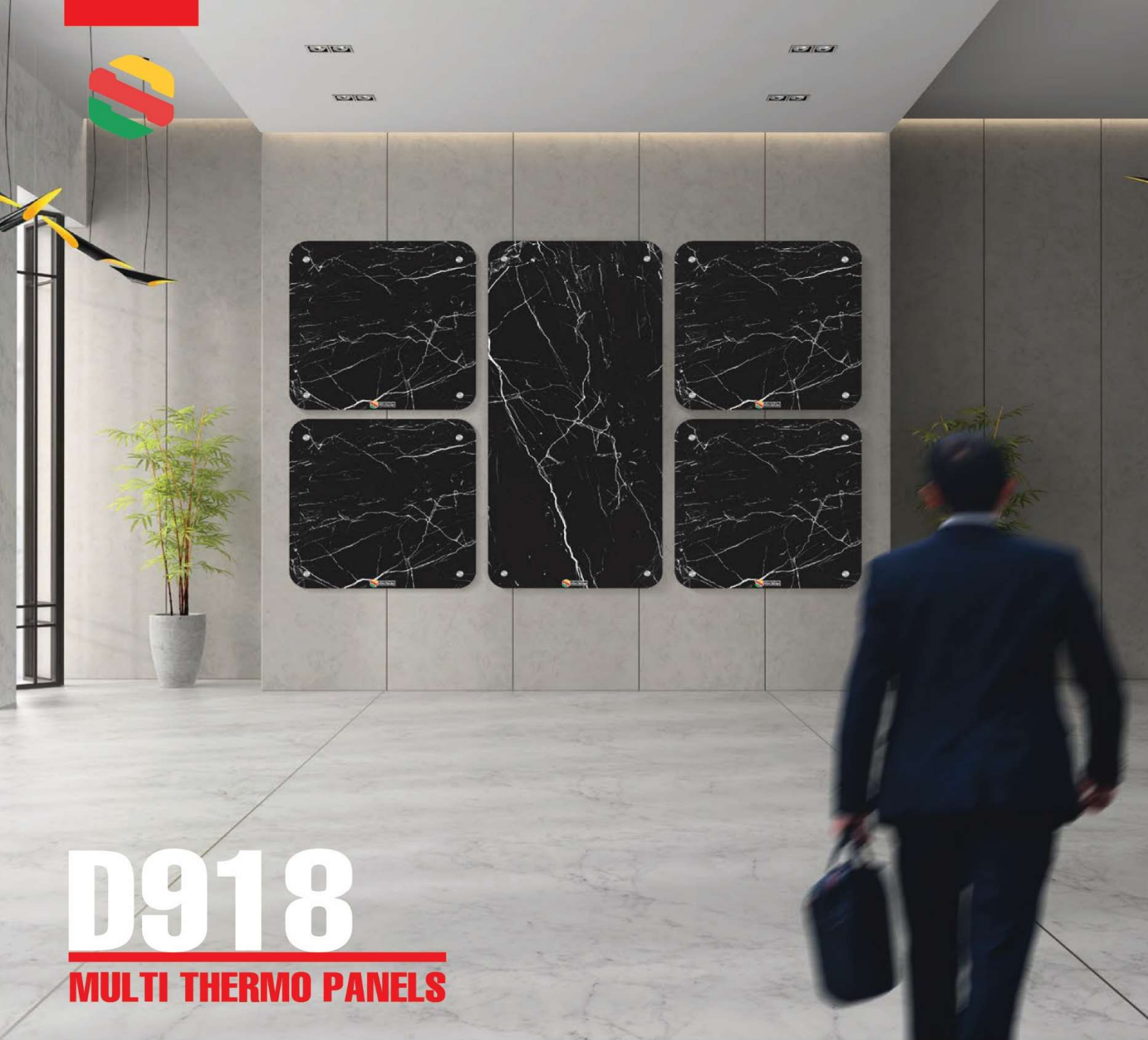


Panels	50 cm x 50 cm   N = 3
Coverage Area	5 - 9 m <sup>2</sup>
Panels Align	-
Inst. Direction	Horizontal / Vertical
Power	450 Watts
Remote Control	Yes
Thermostat	Optional / Yes
Custom Image	Yes

# D917

## MULTI THERMO PANELS





# D918

## MULTI THERMO PANELS

Panels	110 cm x 50 cm N = 1 50 cm x 50 cm N = 4
Coverage Area	15 - 20 m <sup>2</sup>
Panels Align	Vertical
Inst. Direction	Horizontal
Power	1000 Watts
Remote Control	Yes
Thermostat	Optional / Yes
Custom Image	Yes





Panels	110 cm x 50 cm   N = 1 50 cm x 50 cm   N = 4
Coverage Area	15 - 20 m <sup>2</sup>
Panels Align	Vertical / Horizontal
Inst. Direction	Horizontal / Vertical
Power	1000 Watts
Remote Control	Yes
Thermostat	Optional / Yes
Custom Image	Yes

# D918

---

## MULTI THERMO PANELS





# D919

## MULTI THERMO PANELS

Panels	60 cm x 60 cm   N = 3
Coverage Area	8 - 10 m <sup>2</sup>
Panels Align	-
Inst. Direction	Vertical
Power	600 Watts
Remote Control	Yes
Thermostat	Optional / Yes
Custom Image	Yes





Panels	60 cm x 60 cm   N = 3
Coverage Area	8 - 10 m <sup>2</sup>
Panels Align	-
Inst. Direction	Vertical / Horizontal
Power	600 Watts
Remote Control	Yes
Thermostat	Optional / Yes
Custom Image	Yes

# D919

## MULTI THERMO PANELS





# D920

## MULTI THERMO PANELS

Panels	60 cm x 60 cm   N = 3 130 cm x 60 cm   N = 1
Coverage Area	20 - 25 m <sup>2</sup>
Panels Align	Vertical
Inst. Direction	Horizontal
Power	1300 Watts
Remote Control	Yes
Thermostat	Optional / Yes
Custom Image	Yes





Panels	60 cm x 60 cm   N = 3 130 cm x 60 cm   N = 1
Coverage Area	20 - 25 m <sup>2</sup>
Panels Align	Vertical / Horizontal
Inst. Direction	Horizontal / Vertical
Power	1300 Watts
Remote Control	Yes
Thermostat	Optional / Yes
Custom Image	Yes

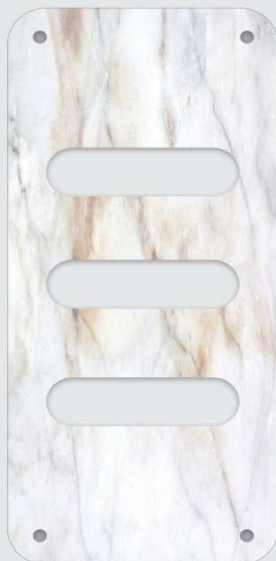
# D920

---

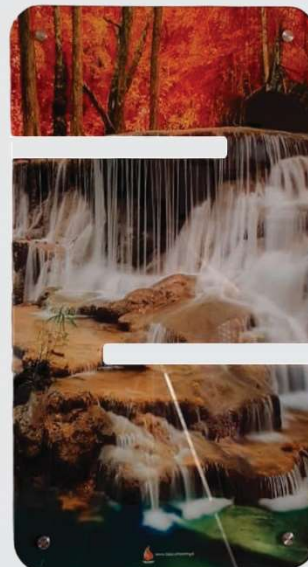
## MULTI THERMO PANELS



# Towel Dryer DecorSUN



**Rectangle Groove**  
Towel Dryer



**Narrow Groove**  
Towel Dryer



**Composite Hanger**  
Towel Dryer



**Bar Hanger**  
Towel Dryer





**TOPSUN**  
SMART, BEAUTIFUL & GREEN





# LIST OF PRODUCTS

## DecorSUN

### Bar Hanger | Towel Dryer

Code	Product	Dimension	Power	Coverage
T-102	DecorSUN   Towel Dryer	50 × 50 cm	150 W	2 ~ 3 m <sup>2</sup>
T-103	DecorSUN   Towel Dryer	50 × 90 cm	250 W	4 ~ 6 m <sup>2</sup>
T-108	DecorSUN   Towel Dryer	50 × 110 cm	400 W	8 ~ 10 m <sup>2</sup>
T-113	DecorSUN   Towel Dryer	50 × 150 cm	500 W	10 ~ 12 m <sup>2</sup>

### Narrow Groove | Towel Dryer

Code	Product	Dimension	Power	Coverage
T-101	DecorSUN   Towel Dryer	50 × 50 cm	150 W	2 ~ 3 m <sup>2</sup>
T-105	DecorSUN   Towel Dryer	50 × 90 cm	250 W	4 ~ 6 m <sup>2</sup>
T-110	DecorSUN   Towel Dryer	50 × 110 cm	400 W	8 ~ 10 m <sup>2</sup>
T-115	DecorSUN   Towel Dryer	50 × 150 cm	500 W	10 ~ 12 m <sup>2</sup>

### Rectangle Groove | Towel Dryer

Code	Product	Dimension	Power	Coverage
T-106	DecorSUN   Towel Dryer	50 × 90 cm	250 W	4 ~ 6 m <sup>2</sup>
T-111	DecorSUN   Towel Dryer	50 × 110 cm	400 W	8 ~ 10 m <sup>2</sup>
T-116	DecorSUN   Towel Dryer	50 × 150 cm	500 W	10 ~ 12 m <sup>2</sup>

### Composite Hanger | Towel Dryer

Code	Product	Dimension	Power	Coverage
T-104	DecorSUN   Towel Dryer	50 × 90 cm	250 W	4 ~ 6 m <sup>2</sup>
T-109	DecorSUN   Towel Dryer	50 × 110 cm	400 W	8 ~ 10 m <sup>2</sup>
T-114	DecorSUN   Towel Dryer	50 × 150 cm	500 W	10 ~ 12 m <sup>2</sup>

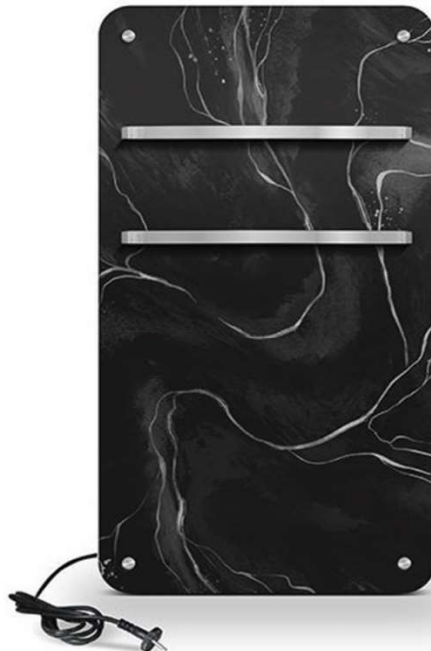




# Super Easy Installation



**GOLDEN**



**SILVER**



**CHROME BLACK**



# 50X50

---

## TOWEL DRYER

Hanger Number	One
Coverage Area	2 - 3 m <sup>2</sup>
Grip Color	Gold Silver Black
Power	150 Watts
Remote Control	Yes
Custom Image	Yes





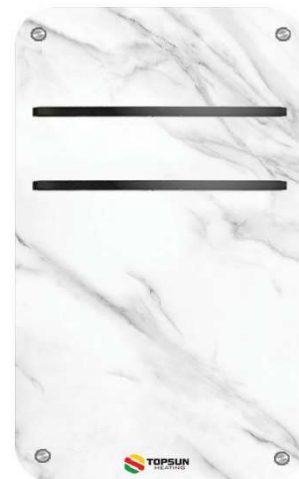


# 50X90

---

## TOWEL DRYER

Hanger Number	Two
Coverage Area	4 - 6 m <sup>2</sup>
Grip Color	Gold Silver Black
Power	250 Watts
Remote Control	Yes
Custom Image	Yes

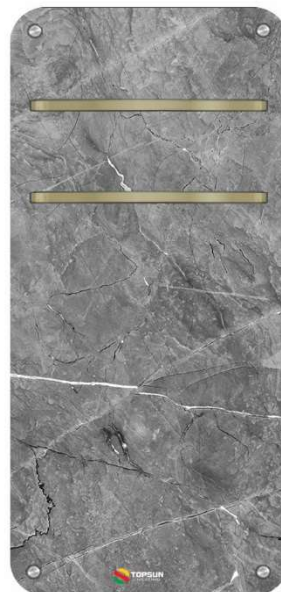




# 50X110

## TOWEL DRYER

Hanger Number	Two
Coverage Area	8 - 10 m <sup>2</sup>
Grip Color	Gold
	Silver
	Black
Power	400 Watts
Remote Control	Yes
Custom Image	Yes







# 50X150

## TOWEL DRYER

Hanger Number	Three
Coverage Area	10 - 12 m <sup>2</sup>
Grip Color	Gold Silver Black
Power	500 Watts
Remote Control	Yes
Custom Image	Yes





**CREATE YOUR OWN  
HOT HARMONY**

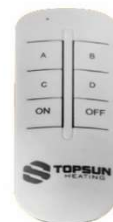
## Thermostat & Controllers



WiFi Smart Heating Thermostat



SMS & Wifi Controller



Remote Controller Dimmer



Analog Ambient Thermostat  
(Wet Area)



Analog Ambient Thermostat

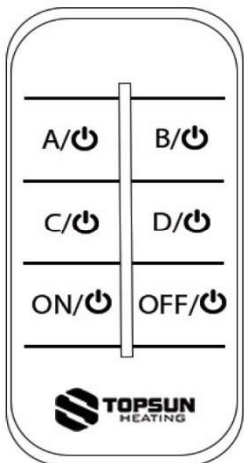
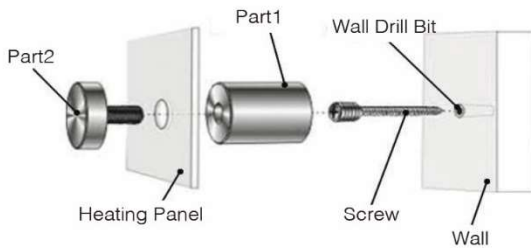




# The installation guide for DecoreSUN heating panels

## Required Equipment:

- 1- Marker / Pencil / Pen
- 2- Ruler
- 3- Metal Tape Measure / Cloth Tape Measure
- 4- Hammer
- 5- Square / Level
- 6- Drill Machine
- 7- Diamond Drill Bit Grade 8 (8mm diameter)
- 8- Drill Bit Grade 8 (6mm diameter)
- 9- Screws (appropriate for the drill bit diameter)
- 10- Screwdriver"



## Settings for models with remote-controlled dimmers:

Button : Turns on the entire panel.

Button : Turns off the entire panel.

Electric Radiators:

Dimensions 200×90 | 150×90 cm: 4 zones | Each AIBICID button activates/deactivates one zone.

Dimensions 130×60 | 150×50 cm: 3 zones | Each AIBIC button activates/deactivates one zone.

Dimensions 110×90 | 90×90 | 80×60 | 110×60 | 110×50 | 90×50 cm:

- Using buttons AIC reduces the generated temperature by half (half of the panel on).
- Using buttons BID increases it to the maximum (entire panel on).

"If you are installing the panel on ceramic walls, drywall, or blocks, it is necessary to replace the mentioned drill bit in the panel installation guide with specialized drill bits (such as butterfly drill bits) or other relevant equipment suitable for the type of

**Step 1** - Selecting and marking a reference point on the wall to initiate the installation process.  
Note: The reference point selection should be compatible with the panel's orientation (horizontal and vertical), its dimensions, and maintaining the distance of the panel from the surrounding walls accurately. Suggestion: It's better to choose the reference point from the top part of the panel.

**Step 2** - Measuring the distance from the reference point to the horizontally aligned point corresponding to the panel's size dimensions and hole spacings, and marking it.

**Step 3** - Drawing a line between the reference point and the aligned point and verifying the alignment using a square or level.

**Step 4** - Drilling holes at the marked points using the diamond drill bit grade 8 and a drilling machine.

**Step 5** - Placing the drill bit holders in the drilled holes using hammer strikes.

**Step 6** - Removing the heating panel from its box and disassembling the metal fixtures by rotating them in a clockwise direction.

**Step 7** - Attaching piece 1 of the metal fixtures to the drill bit holders using screws and a screwdriver (clockwise direction).

**Step 8** - Positioning the panel against piece 1 of the metal fixtures and attaching piece 2 by passing it through the panel's holes into piece 1.

**Step 9** - Marking two remaining drilling spots on the wall and repeating steps 3 to 8.

**Step 10** - Connecting the heating panel wire to the power outlet."

# WARRANTY AND AFTER-SALES SERVICE CONDITIONS



***Lifetime*** **100%**  
***Performance Guarantee***



Our **UnderFloor Heating Films (TopFilm)** for indoor products come with a **10-years** warranty, ensuring a **LifeTime** of service



Our **Sub - Floor Heating Films (TopFilm)** for indoor products come with a **1-year** warranty, ensuring a **LifeTime** of service



Our **Thermo Panels (DecoreSUN)** for indoor products come with a **10-years** warranty, ensuring a **LifeTime** of service



For after sale services please visit:  
<https://www.topsunheating.com/after-sale-services>







[www.topsunheating.net](http://www.topsunheating.net)  
[info@topsunheating.net](mailto:info@topsunheating.net)

English Site

Whatsapp: +1 778 893 8229

[www.topsunheating.ir](http://www.topsunheating.ir)  
[info@topsunheating.ir](mailto:info@topsunheating.ir)

Persian Site

Whatsapp: +98 912 019 8229

Call Center: +98 (0) 21 8899 3686 | +98 (0) 21 8899 3780